



The Kalyan Wholesale Merchants' Education Society's,

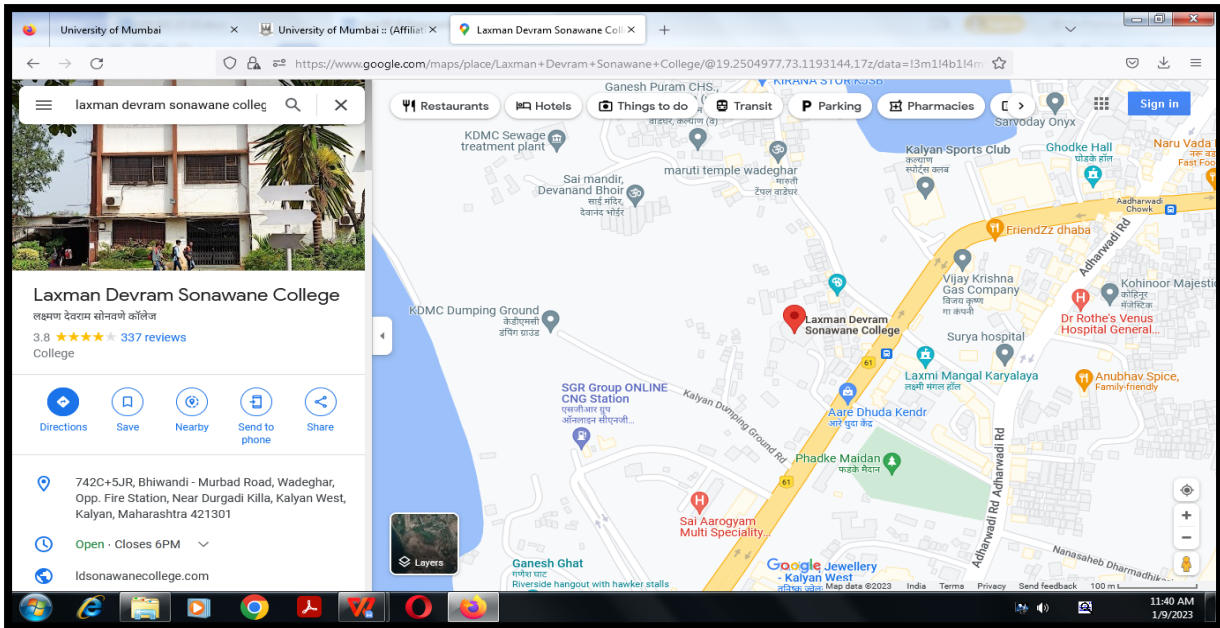
# LAXMAN DEVRAM SONAWANE COLLEGE OF ARTS & COMMERCE, KALYAN [W]

[Permanently Affiliated to University of Mumbai]

Accredited by NAAC - Grade 'B'

ISO 9001 : 2015

## College Location



## College Building



*Annie*  
PRINCIPAL  
L. D. SONAWANE COLLEGE OF  
Arts, Commerce & Science, Kalyan (W)



The Kalyan Wholesale Merchants' Education Society's,

# LAXMAN DEVRAM SONAWANE COLLEGE OF ARTS & COMMERCE, KALYAN [W]

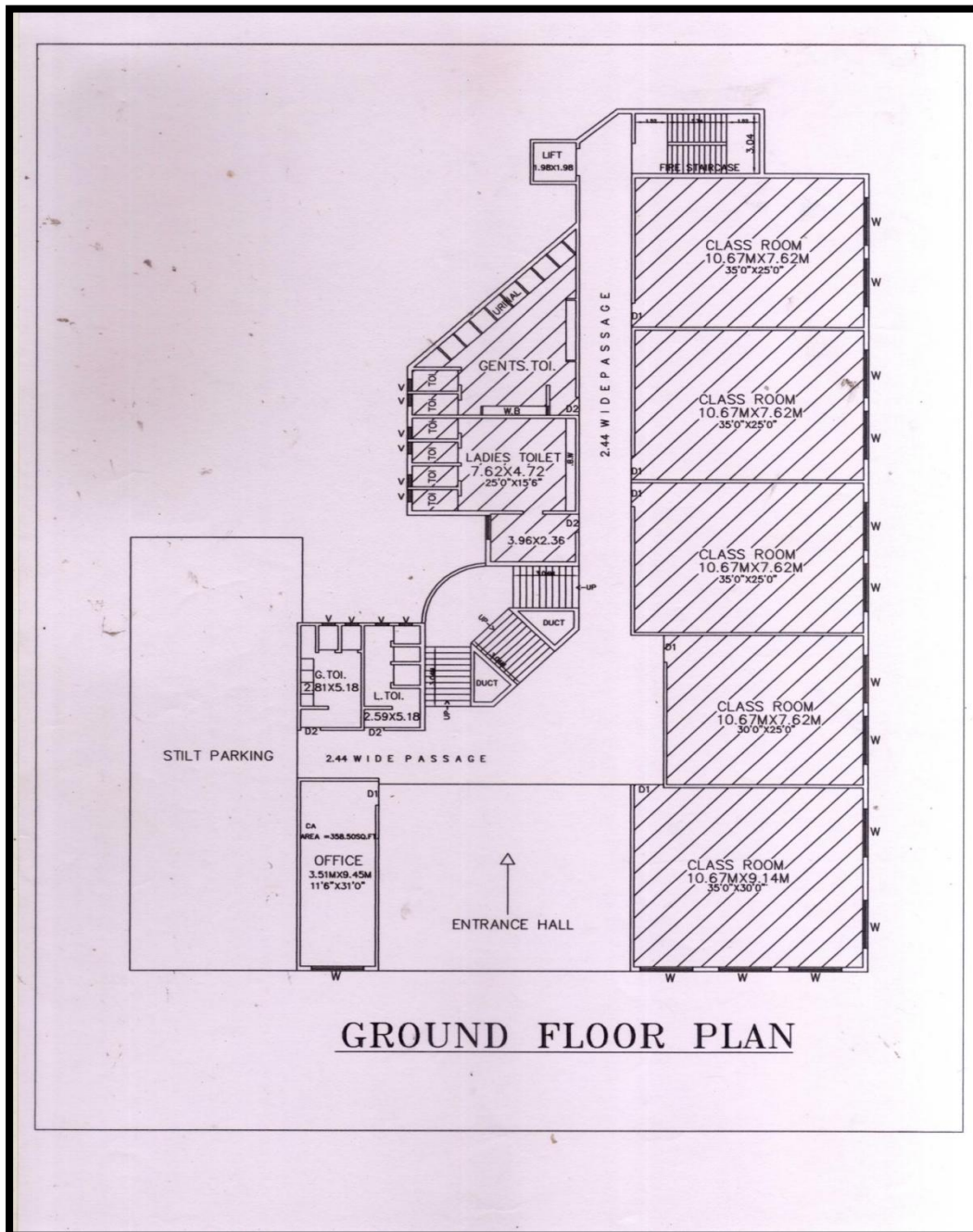
[Permanently Affiliated to University of Mumbai]

Accredited by NAAC - Grade 'B'

ISO 9001 : 2015

## BUILDING DIAGRAM FLOORWISE

### Ground Floor



*Annie*  
PRINCIPAL  
L. D. SONAWANE COLLEGE OF  
Arts, Commerce & Science, Kalyan (W)



The Kalyan Wholesale Merchants' Education Society's,

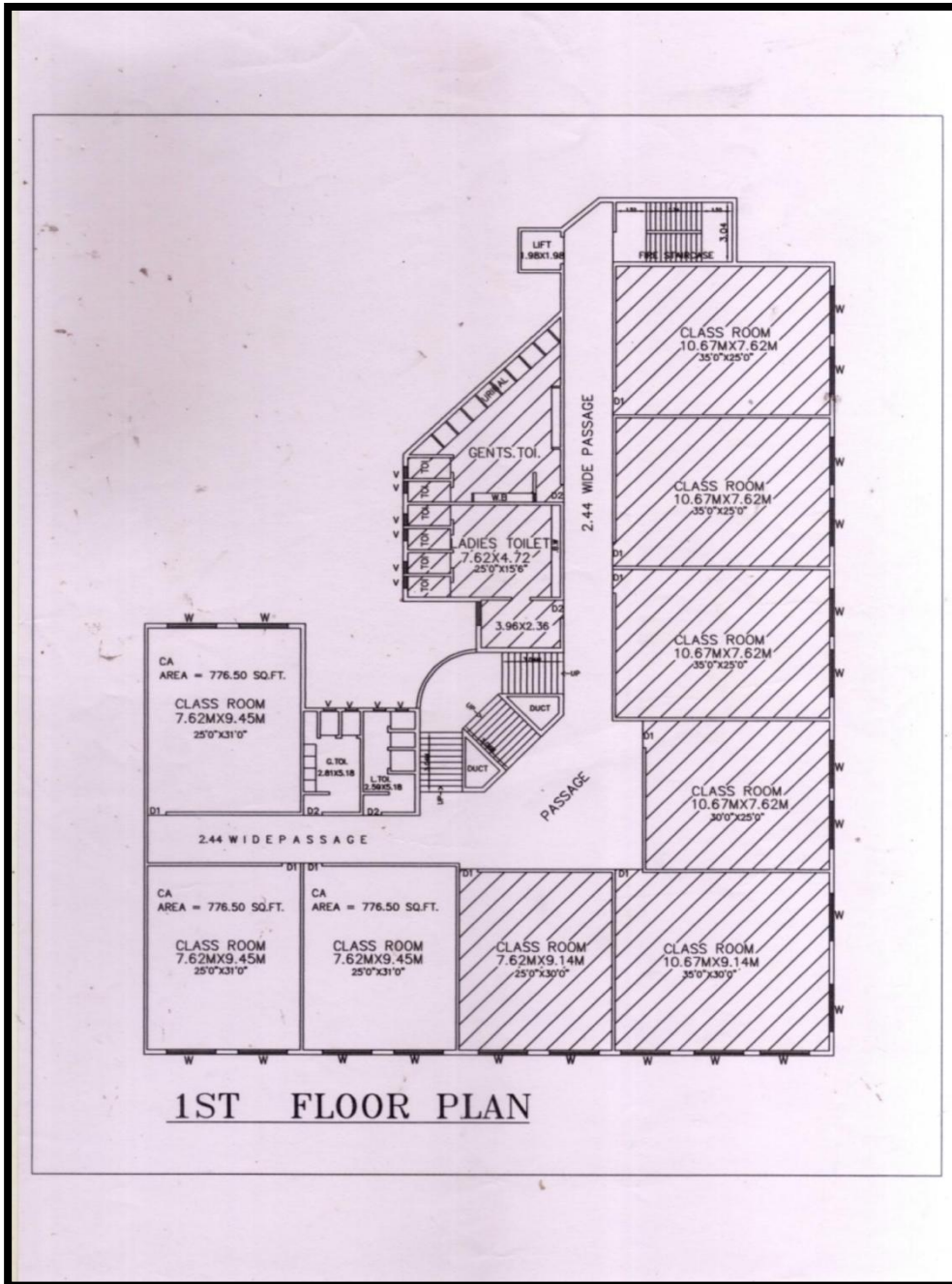
# LAXMAN DEVRAM SONAWANE COLLEGE OF ARTS & COMMERCE, KALYAN [W]

[Permanently Affiliated to University of Mumbai]

Accredited by NAAC - Grade 'B'

ISO 9001 : 2015

## First Floor



1ST FLOOR PLAN



*Annie*  
PRINCIPAL  
L. D. SONAWANE COLLEGE OF  
Arts, Commerce & Science, Kalyan (W)



The Kalyan Wholesale Merchants' Education Society's,

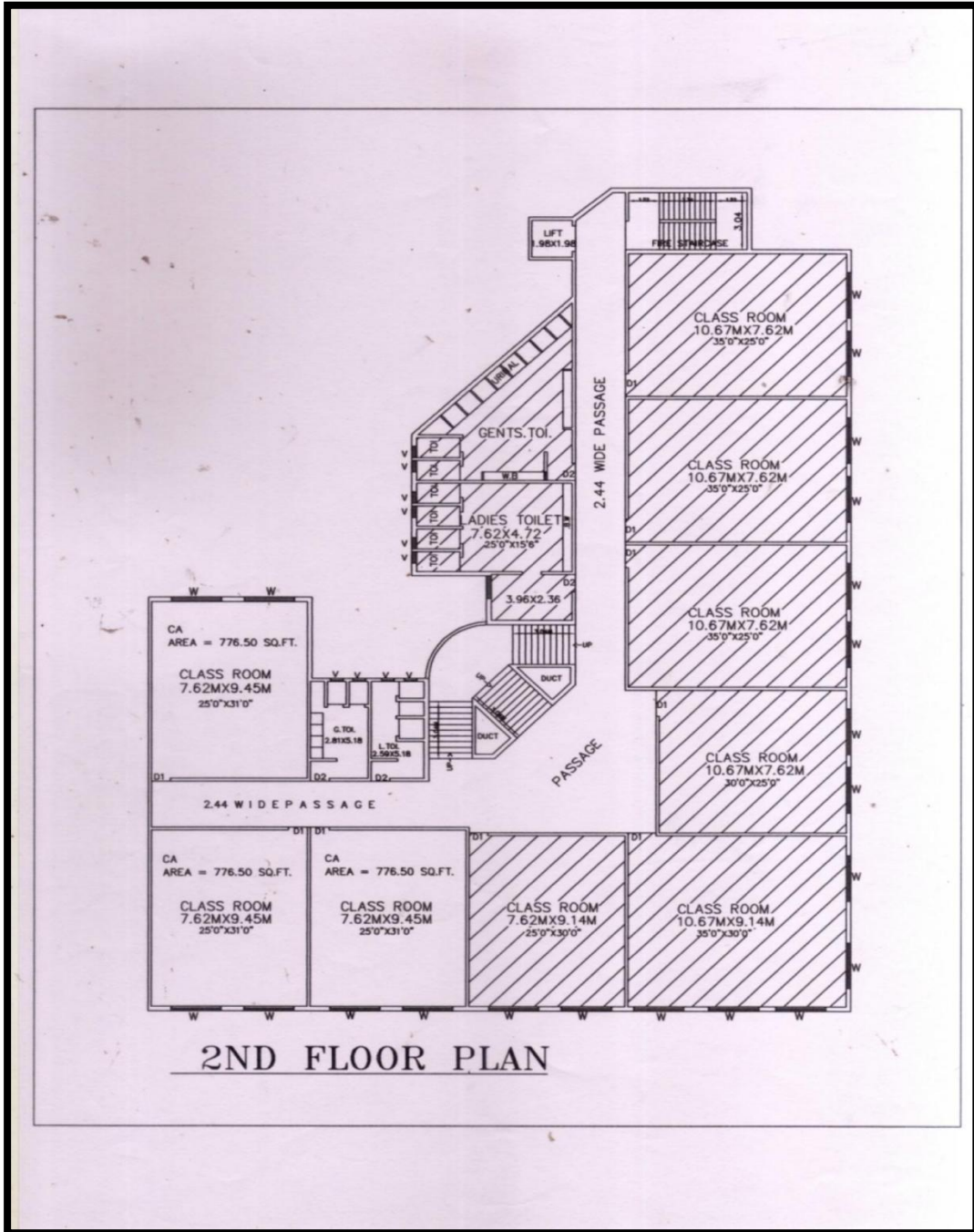
# LAXMAN DEVRAM SONAWANE COLLEGE OF ARTS & COMMERCE, KALYAN [W]

[Permanently Affiliated to University of Mumbai]

Accredited by NAAC - Grade 'B'

ISO 9001 : 2015

## Second Floor



2ND FLOOR PLAN



*Annie*  
PRINCIPAL  
L. D. SONAWANE COLLEGE OF  
Arts, Commerce & Science, Kalyan (W)



The Kalyan Wholesale Merchants' Education Society's,

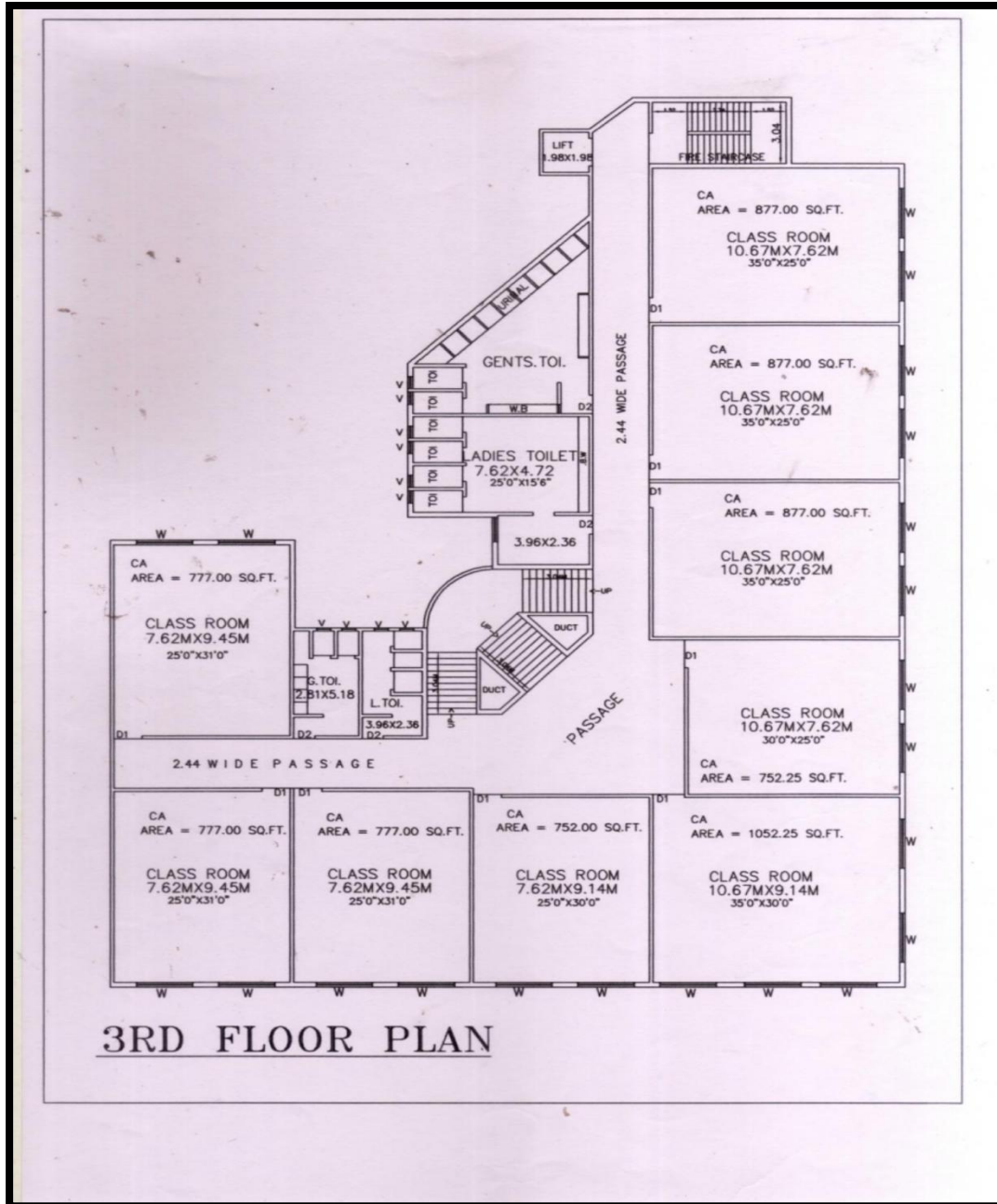
# LAXMAN DEVRAM SONAWANE COLLEGE OF ARTS & COMMERCE, KALYAN [W]

[Permanently Affiliated to University of Mumbai]

Accredited by NAAC - Grade 'B'

ISO 9001 : 2015

## Third Floor



*Annie*  
PRINCIPAL  
L. D. SONAWANE COLLEGE OF  
Arts, Commerce & Science, Kalyan (W)



The Kalyan Wholesale Merchants' Education Society's,

# LAXMAN DEVRAM SONAWANE COLLEGE OF ARTS & COMMERCE, KALYAN [W]

[Permanently Affiliated to University of Mumbai]

Accredited by NAAC - Grade 'B'

ISO 9001 : 2015

## Play Ground:



*Annie*  
PRINCIPAL  
L. D. SONAWANE COLLEGE OF  
Arts, Commerce & Science, Kalyan (W)



The Kalyan Wholesale Merchants' Education Society's,

## LAXMAN DEVRAM SONAWANE COLLEGE OF ARTS & COMMERCE, KALYAN [W]

[Permanently Affiliated to University of Mumbai]

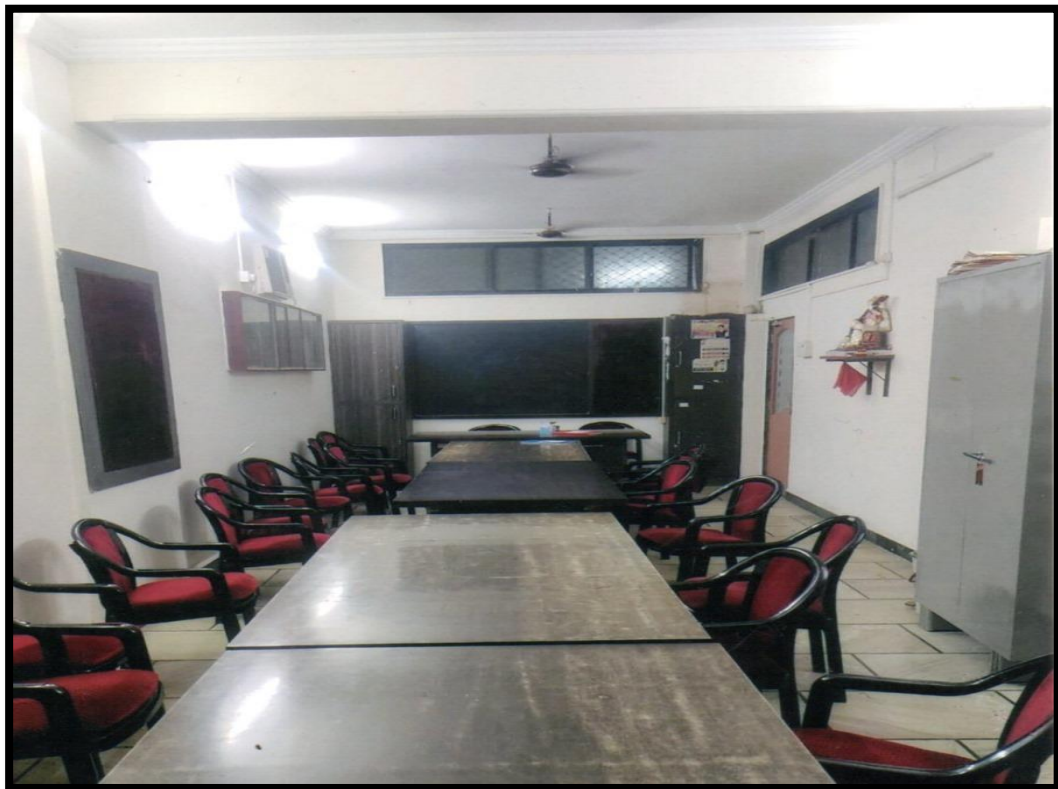
Accredited by NAAC - Grade 'B'

ISO 9001 : 2015

### Principal Cabin



### Staff Room



*Annie*  
PRINCIPAL  
L. D. SONAWANE COLLEGE OF  
Arts, Commerce & Science, Kalyan (W)



The Kalyan Wholesale Merchants' Education Society's,

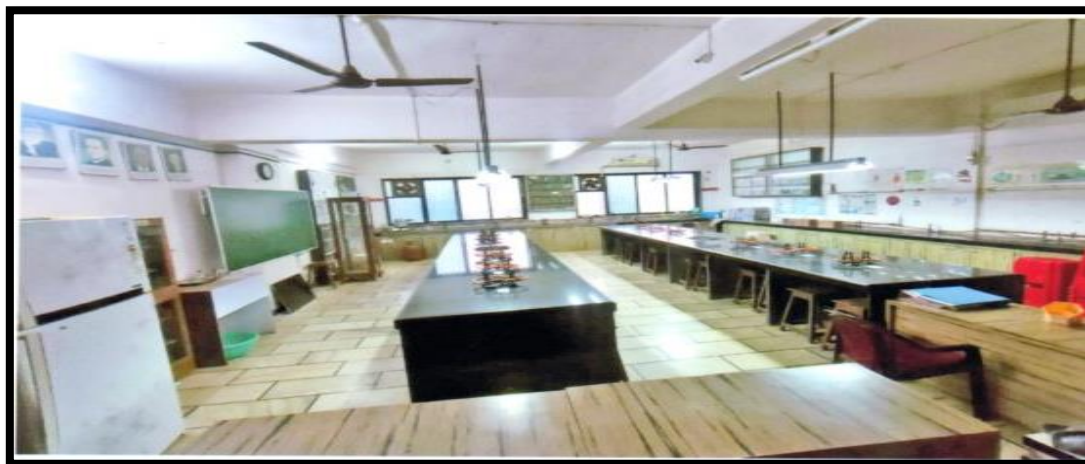
**LAXMAN DEVRAM SONAWANE COLLEGE OF ARTS & COMMERCE, KALYAN [W]**

[Permanently Affiliated to University of Mumbai]

Accredited by NAAC - Grade 'B'

ISO 9001 : 2015

### Botany Lab



### Chemistry Lab



*Annie*  
PRINCIPAL  
L. D. SONAWANE COLLEGE OF  
Arts, Commerce & Science, Kalyan (W)





The Kalyan Wholesale Merchants' Education Society's,

**LAXMAN DEVRAM SONAWANE COLLEGE OF ARTS & COMMERCE, KALYAN [W]**

[Permanently Affiliated to University of Mumbai]

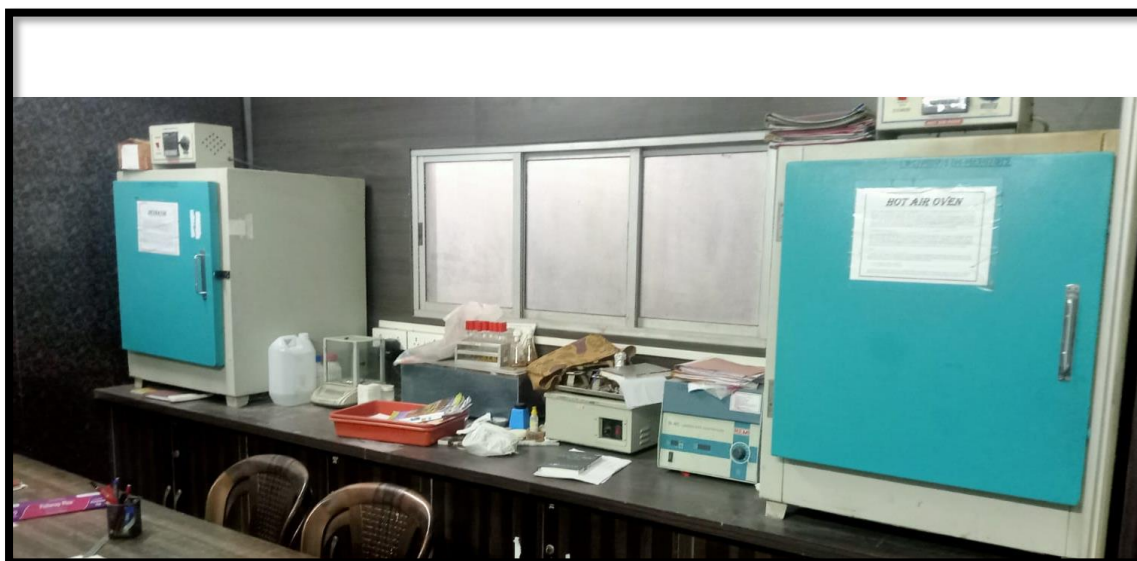
Accredited by NAAC - Grade 'B'

ISO 9001 : 2015

### Physics Lab



### Microbiology Lab



*Annie*  
PRINCIPAL  
L. D. SONAWANE COLLEGE OF  
Arts, Commerce & Science, Kalyan (W)



The Kalyan Wholesale Merchants' Education Society's,

**LAXMAN DEVRAM SONAWANE COLLEGE OF ARTS & COMMERCE, KALYAN [W]**

[Permanently Affiliated to University of Mumbai]

Accredited by NAAC - Grade 'B'

ISO 9001 : 2015

### Information Technology Lab



### Computer Science Lab



*Annie*  
PRINCIPAL  
L. D. SONAWANE COLLEGE OF  
Arts, Commerce & Science, Kalyan (W)



The Kalyan Wholesale Merchants' Education Society's,

## **LAXMAN DEVRAM SONAWANE COLLEGE OF ARTS & COMMERCE, KALYAN [W]**

[Permanently Affiliated to University of Mumbai]

Accredited by NAAC - Grade 'B'

ISO 9001 : 2015

### **Conference Room**



### **Audio-Visual Room**



*Annie*  
PRINCIPAL  
L. D. SONAWANE COLLEGE OF  
Arts, Commerce & Science, Kalyan (W)



The Kalyan Wholesale Merchants' Education Society's,

## **LAXMAN DEVRAM SONAWANE COLLEGE OF ARTS & COMMERCE, KALYAN [W]**

[Permanently Affiliated to University of Mumbai]

Accredited by NAAC - Grade 'B'

ISO 9001 : 2015

### Class Room



### Library



*Annie*  
PRINCIPAL  
L. D. SONAWANE COLLEGE OF  
Arts, Commerce & Science, Kalyan (W)



The Kalyan Wholesale Merchants' Education Society's,

## **LAXMAN DEVRAM SONAWANE COLLEGE OF ARTS & COMMERCE, KALYAN [W]**

[Permanently Affiliated to University of Mumbai]

Accredited by NAAC - Grade 'B'

ISO 9001 : 2015

### Canteen



### Rock Garden



*Annie*  
PRINCIPAL  
L. D. SONAWANE COLLEGE OF  
Arts, Commerce & Science, Kalyan (W)



The Kalyan Wholesale Merchants' Education Society's,

**LAXMAN DEVRAM SONAWANE COLLEGE OF ARTS & COMMERCE, KALYAN [W]**

[Permanently Affiliated to University of Mumbai]

Accredited by NAAC - Grade 'B'

ISO 9001 : 2015

### Botanical Garden



### Vertical Garden



*Annie*  
PRINCIPAL  
L. D. SONAWANE COLLEGE OF  
Arts, Commerce & Science, Kalyan (W)



The Kalyan Wholesale Merchants' Education Society's,

**LAXMAN DEVRAM SONAWANE COLLEGE OF ARTS & COMMERCE, KALYAN [W]**

[Permanently Affiliated to University of Mumbai]

Accredited by NAAC - Grade 'B'

ISO 9001 : 2015

### Poly House



### Drip Irrigation



*Annie*  
PRINCIPAL  
L. D. SONAWANE COLLEGE OF  
Arts, Commerce & Science, Kalyan (W)



The Kalyan Wholesale Merchants' Education Society's,

**LAXMAN DEVRAM SONAWANE COLLEGE OF ARTS & COMMERCE, KALYAN [W]**

[Permanently Affiliated to University of Mumbai]

Accredited by NAAC - Grade 'B'

ISO 9001 : 2015

### Water Harvesting with Borewell



*Anmit*  
PRINCIPAL  
L. D. SONAWANE COLLEGE OF  
Arts, Commerce & Science, Kalyan (W)





The Kalyan Wholesale Merchants' Education Society's,

**LAXMAN DEVRAM SONAWANE COLLEGE OF ARTS & COMMERCE, KALYAN [W]**

[Permanently Affiliated to University of Mumbai]

Accredited by NAAC - Grade 'B'

ISO 9001 : 2015

### Composit Pit



### Solar Panel



*Anmit*  
PRINCIPAL  
L. D. SONAWANE COLLEGE OF  
Arts, Commerce & Science, Kalyan (W)



The Kalyan Wholesale Merchants' Education Society's,

**LAXMAN DEVRAM SONAWANE COLLEGE OF ARTS & COMMERCE, KALYAN [W]**

[Permanently Affiliated to University of Mumbai]

Accredited by NAAC - Grade 'B'

ISO 9001 : 2015

### Water Cooler



### Fire Extinguisher



*Annie*  
PRINCIPAL  
L. D. SONAWANE COLLEGE OF  
Arts, Commerce & Science, Kalyan (W)



The Kalyan Wholesale Merchants' Education Society's,

**LAXMAN DEVRAM SONAWANE COLLEGE OF ARTS & COMMERCE, KALYAN [W]**

[Permanently Affiliated to University of Mumbai]

Accredited by NAAC - Grade 'B'

ISO 9001 : 2015

**Automatic Sanitary Napkin Vending Machine:**



**Sanitary Napkin Disposal Machine:**



*Annie*  
PRINCIPAL  
L. D. SONAWANE COLLEGE OF  
Arts, Commerce & Science, Kalyan (W)



The Kalyan Wholesale Merchants' Education Society's,

**LAXMAN DEVRAM SONAWANE COLLEGE OF ARTS & COMMERCE, KALYAN [W]**

[Permanently Affiliated to University of Mumbai]

Accredited by NAAC - Grade 'B'

ISO 9001 : 2015

### CCTV:



### Generator



*Annie*  
PRINCIPAL  
L. D. SONAWANE COLLEGE OF  
Arts, Commerce & Science, Kalyan (W)



The Kalyan Wholesale Merchants' Education Society's,

**LAXMAN DEVRAM SONAWANE COLLEGE OF ARTS & COMMERCE, KALYAN [W]**

[Permanently Affiliated to University of Mumbai]

Accredited by NAAC - Grade 'B'

ISO 9001 : 2015

**General Office**



*Annie*  
PRINCIPAL  
L. D. SONAWANE COLLEGE OF  
Arts, Commerce & Science, Kalyan (W)