



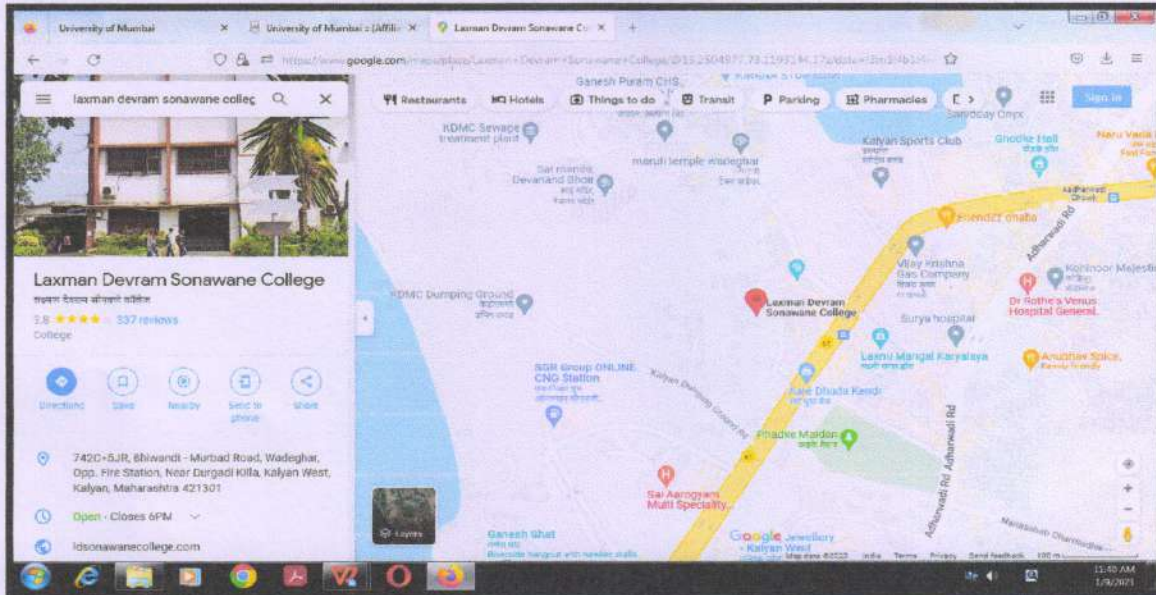
**LAXMAN DEVRAM SONAWANE COLLEGE, KALYAN**  
**DEGREE COLLEGE OF ARTS & COMMERCE INCLUDING BMS**  
(Accredited by NAAC with 'B' Grade & Permanently Affiliated to University of Mumbai)

**&**  
**JUNIOR COLLEGE OF ARTS, COMMERCE & SCIENCE**  
(Conducted by :- Kalyan Wholesale Merchants' Education Society)

Shri. Shantaram Hendar Bhoir  
Chairman  
Shri. Vijay R. Pandit  
General Secretary  
Ms. Annie Antony  
I/c Principal

Opp. Fire Station,  
Near Durgadi Killa,  
Murbad Road,  
Kalyan(W).  
Phone:- 2212372/78

**College Location**



**College Building**



  
**PRINCIPAL**  
**L. D. SONAWANE COLLEGE**  
**Kalyan (W)**





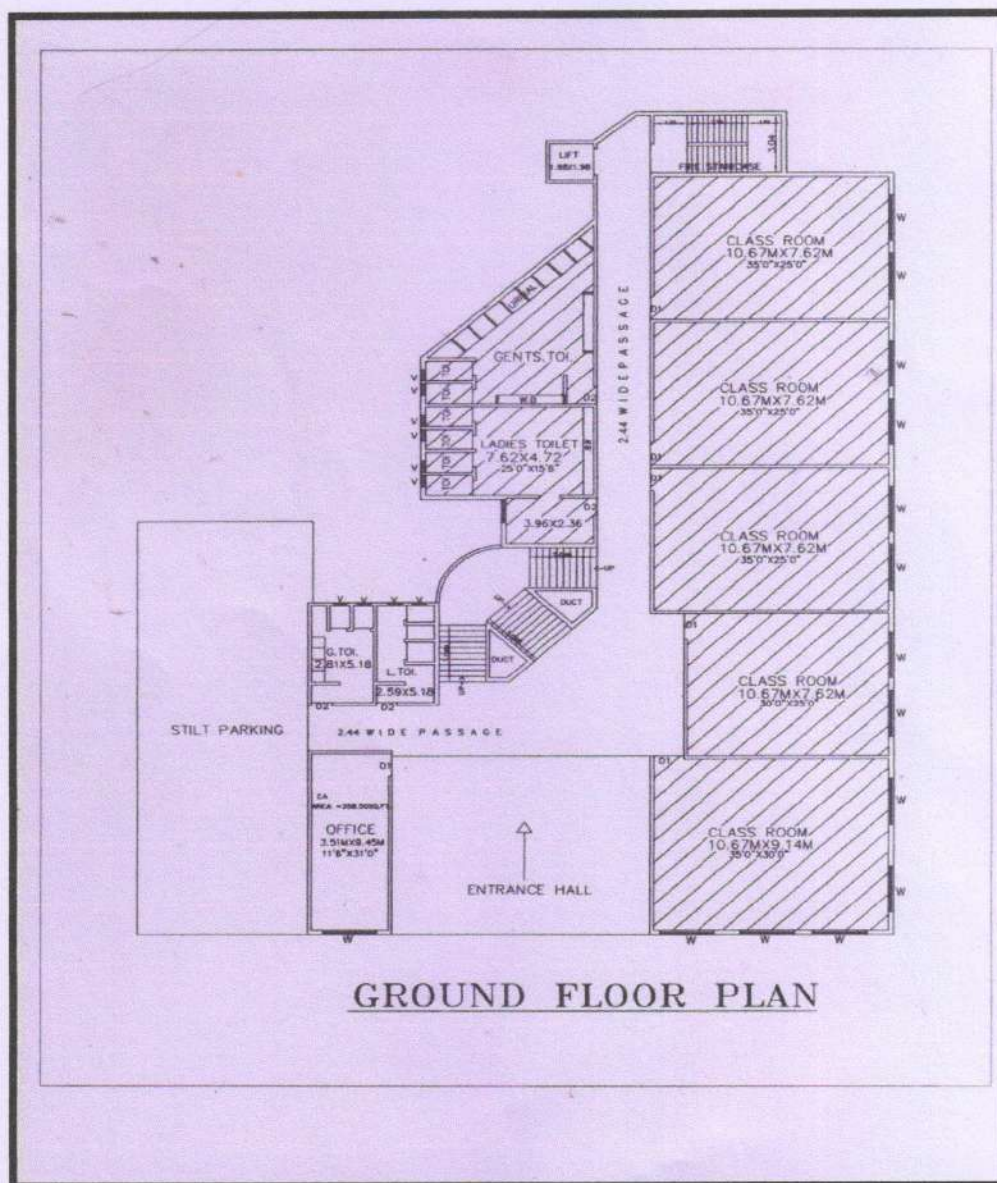
**LAXMAN DEVRAM SONAWANE COLLEGE, KALYAN**  
**DEGREE COLLEGE OF ARTS & COMMERCE INCLUDING BMS**  
(Accredited by NAAC with 'B' Grade & Permanently Affiliated to University of Mumbai)  
&  
**JUNIOR COLLEGE OF ARTS, COMMERCE & SCIENCE**  
(Conducted by :- Kalyan Wholesale Merchants' Education Society)

Shri. Shantaram Hendar Bhoir  
Chairman  
Shri. Vijay R. Pandit  
General Secretary  
Ms. Annie Antony  
I/c Principal

Opp. Fire Station,  
Near Durgadi Killa,  
Murbad Road,  
Kalyan(W).  
Phone:- 2212372/78

**BUILDING DIAGRAM FLOORWISE**

**Ground Floor**



**GROUND FLOOR PLAN**



*[Signature]*  
**PRINCIPAL**  
**L.D. SONAWANE COLLEGE**  
**Kalyan (W)**





# LAXMAN DEVRAM SONAWANE COLLEGE, KALYAN

DEGREE COLLEGE OF ARTS & COMMERCE INCLUDING BMS

(Accredited by NAAC with 'B' Grade & Permanently Affiliated to University of Mumbai)

&

JUNIOR COLLEGE OF ARTS, COMMERCE & SCIENCE

(Conducted by :- Kalyan Wholesale Merchants' Education Society)

Shri. Shantaram Hendar Bhoir

Chairman

Shri. Vijay R. Pandit

General Secretary

Ms. Annie Antony

I/c Principal

Opp. Fire Station,

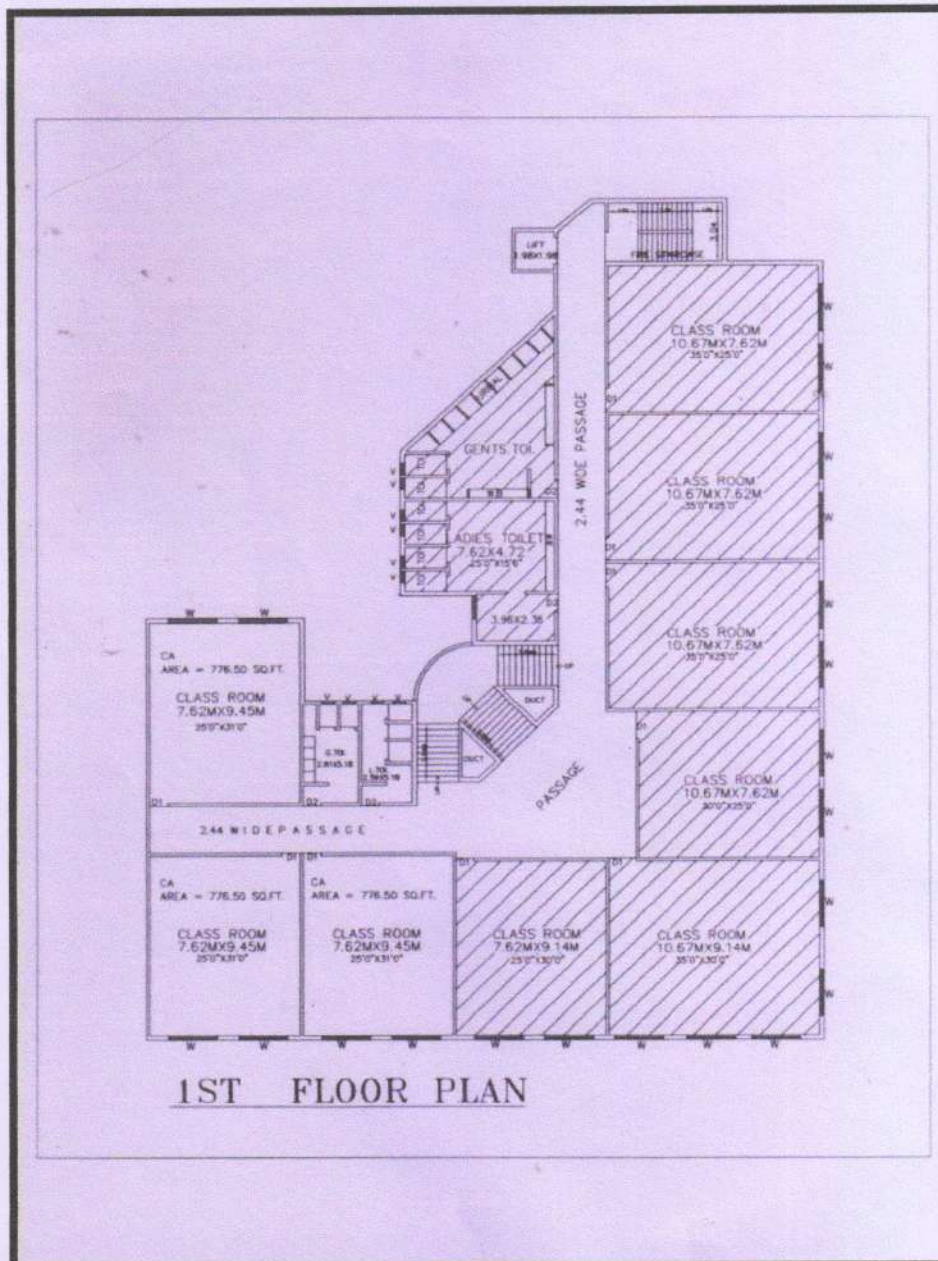
Near Durgadi Killa,

Murbad Road,

Kalyan(W).

Phone:- 2212372/78

## First Floor



*[Signature]*  
**PRINCIPAL**  
L.D. SONAWANE COLLEGE  
Kalyan (W)





# LAXMAN DEVRAM SONAWANE COLLEGE, KALYAN

DEGREE COLLEGE OF ARTS & COMMERCE INCLUDING BMS

(Accredited by NAAC with 'B' Grade & Permanently Affiliated to University of Mumbai)

&

JUNIOR COLLEGE OF ARTS, COMMERCE & SCIENCE

(Conducted by :- Kalyan Wholesale Merchants' Education Society)

Shri. Shantaram Hendar Bhoir

Chairman

Shri. Vijay R. Pandit

General Secretary

Ms. Annie Antony

I/c Principal

Opp. Fire Station,

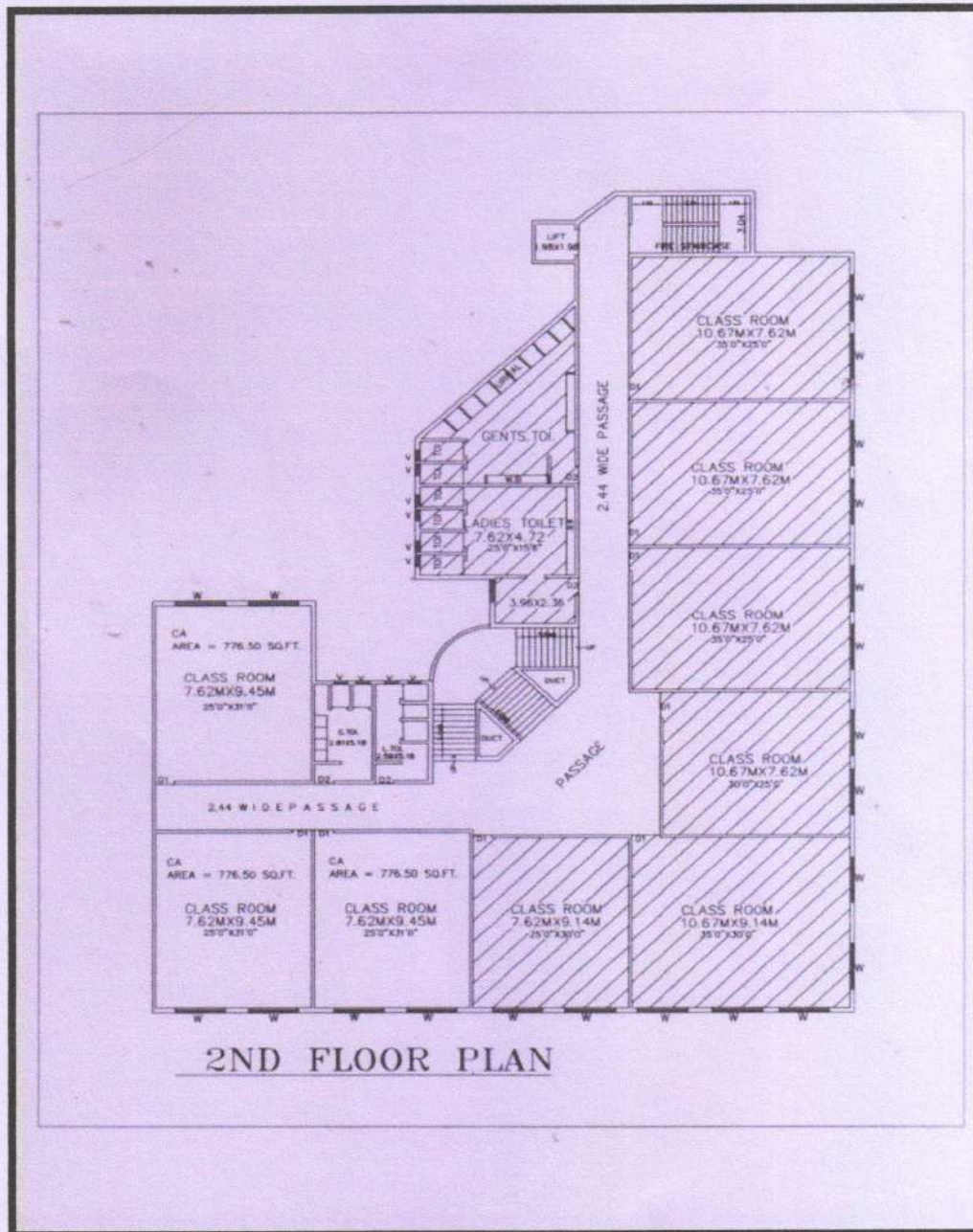
Near Durgadi Killa,

Murbad Road,

Kalyan(W).

Phone:- 2212372/78

## Second Floor



*[Signature]*  
PRINCIPAL  
L.D. SONAWANE COLLEGE  
Kalyan (W)





# LAXMAN DEVRAM SONAWANE COLLEGE, KALYAN

DEGREE COLLEGE OF ARTS & COMMERCE INCLUDING BMS

(Accredited by NAAC with 'B' Grade & Permanently Affiliated to University of Mumbai)

&

JUNIOR COLLEGE OF ARTS, COMMERCE & SCIENCE

(Conducted by :- Kalyan Wholesale Merchants' Education Society)

Shri. Shantaram Hendar Bhoir

Chairman

Shri. Vijay R. Pandit

General Secretary

Ms. Annie Antony

I/c Principal

Opp. Fire Station,

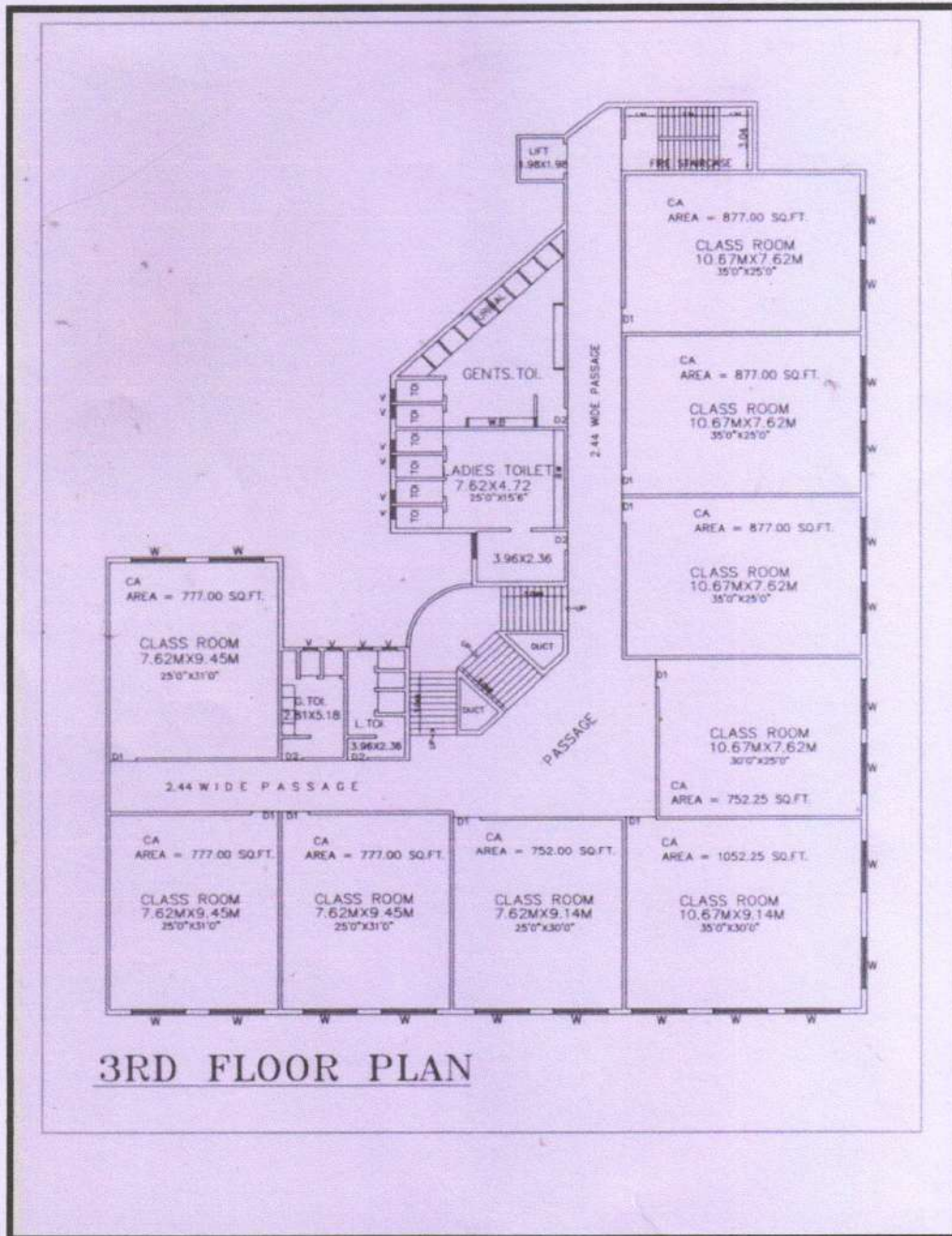
Near Durgadi Killa,

Murbad Road,

Kalyan(W).

Phone:- 2212372/78

## Third Floor



*[Signature]*  
**PRINCIPAL**  
L.D. SONAWANE COLLEGE  
Kalyan (W)





**LAXMAN DEVRAM SONAWANE COLLEGE, KALYAN**  
**DEGREE COLLEGE OF ARTS & COMMERCE INCLUDING BMS**  
(Accredited by NAAC with 'B' Grade & Permanently Affiliated to University of Mumbai)  
&  
**JUNIOR COLLEGE OF ARTS, COMMERCE & SCIENCE**  
(Conducted by :- Kalyan Wholesale Merchants' Education Society)

Shri. Shantaram Hendar Bhoir  
Chairman  
Shri. Vijay R. Pandit  
General Secretary  
Ms. Annie Antony  
I/c Principal

Opp. Fire Station,  
Near Durgadi Killa,  
Murbad Road,  
Kalyan(W).  
Phone:- 2212372/78

**Play Ground:**



  
**PRINCIPAL**  
L. D. SONAWANE COLLEGE  
Kalyan (W)





**LAXMAN DEVRAM SONAWANE COLLEGE, KALYAN**  
**DEGREE COLLEGE OF ARTS & COMMERCE INCLUDING BMS**  
(Accredited by NAAC with 'B' Grade & Permanently Affiliated to University of Mumbai)  
&  
**JUNIOR COLLEGE OF ARTS, COMMERCE & SCIENCE**  
(Conducted by :- Kalyan Wholesale Merchants' Education Society)

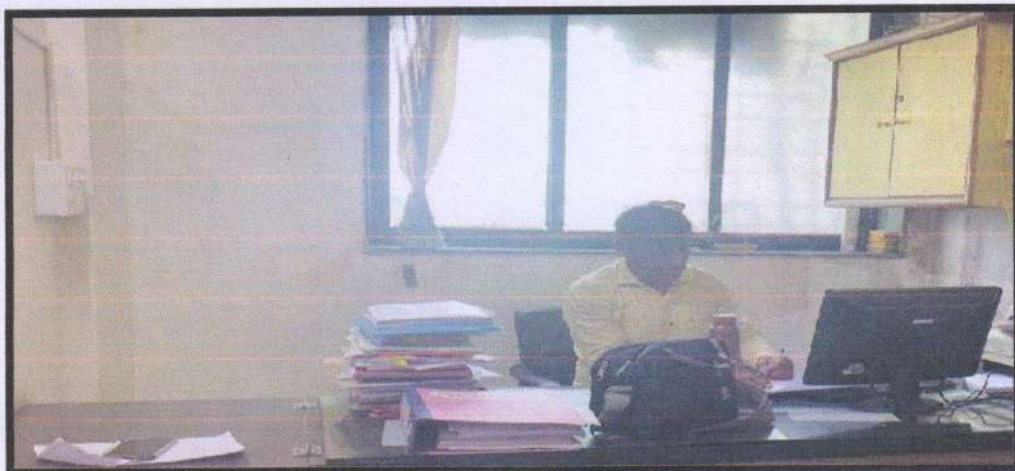
Shri. Shantaram Hendar Bhoir  
Chairman  
Shri. Vijay R. Pandit  
General Secretary  
Ms. Annic Antony  
I/c Principal


Opp. Fire Station,  
Near Durgadi Killa,  
Murbad Road,  
Kalyan(W).  
Phone:- 2212372/78

**Principal Cabin**



**Vice-Principal Cabin**



  
**PRINCIPAL**  
**L. D. SONAWANE COLLEGE**  
**Kalyan (W)**





# LAXMAN DEVRAM SONAWANE COLLEGE, KALYAN

DEGREE COLLEGE OF ARTS & COMMERCE INCLUDING BMS

(Accredited by NAAC with 'B' Grade & Permanently Affiliated to University of Mumbai)

&

JUNIOR COLLEGE OF ARTS, COMMERCE & SCIENCE

(Conducted by :- Kalyan Wholesale Merchants' Education Society)

Shri. Shantaram Hendar Bhoir

Chairman

Shri. Vijay R. Pandit

General Secretary

Ms. Annie Antony

I/c Principal

Opp. Fire Station,

Near Durgadi Killa,

Murbad Road,

Kalyan(W).

Phone:- 2212372/78

## Botany Lab



## Chemistry Lab



**PRINCIPAL**  
L. D. SONAWANE COLLEGE  
Kalyan (W)





**LAXMAN DEVRAM SONAWANE COLLEGE, KALYAN**  
**DEGREE COLLEGE OF ARTS & COMMERCE INCLUDING BMS**  
(Accredited by NAAC with 'B' Grade & Permanently Affiliated to University of Mumbai)

&

**JUNIOR COLLEGE OF ARTS, COMMERCE & SCIENCE**  
(Conducted by :- Kalyan Wholesale Merchants' Education Society)

Shri. Shantaram Hendar Bhoir  
Chairman  
Shri. Vijay R. Pandit  
General Secretary  
Ms. Annie Antony  
I/c Principal

Opp. Fire Station,  
Near Durgadi Killa,  
Murbad Road,  
Kalyan(W).  
Phone:- 2212372/78

**Physics Lab**



**Microbiology Lab**



  
**PRINCIPAL**  
**L.D. SONAWANE COLLEGE**  
**Kalyan (W)**





# LAXMAN DEVRAM SONAWANE COLLEGE, KALYAN

DEGREE COLLEGE OF ARTS & COMMERCE INCLUDING BMS

(Accredited by NAAC with 'B' Grade & Permanently Affiliated to University of Mumbai)

&

JUNIOR COLLEGE OF ARTS, COMMERCE & SCIENCE

(Conducted by :- Kalyan Wholesale Merchants' Education Society)

Shri. Shantaram Hendar Bhoir

Chairman

Shri. Vijay R. Pandit

General Secretary

Ms. Annie Antony

I/c Principal

Opp. Fire Station,

Near Durgadi Killa,

Murbad Road,

Kalyan(W).

Phone:- 2212372/78

## Information Technology Lab



## Computer Science Lab



  
**PRINCIPAL**  
L. D. SONAWANE COLLEGE  
Kalyan (W)





# **LAXMAN DEVRAM SONAWANE COLLEGE, KALYAN**

**DEGREE COLLEGE OF ARTS & COMMERCE INCLUDING BMS**

(Accredited by NAAC with 'B' Grade & Permanently Affiliated to University of Mumbai)

**&**

**JUNIOR COLLEGE OF ARTS, COMMERCE & SCIENCE**

(Conducted by :- Kalyan Wholesale Merchants' Education Society)

Shri. Shantaram Hendar Bhoir

Chairman

Shri. Vijay R. Pandit

General Secretary

Ms. Annie Antony

I/c Principal

Opp. Fire Station,

Near Durgadi Killa,

Murbad Road,

Kalyan(W).


Phone:- 2212372/78

## **Conference Room**



## **Audio-Visual Room**



  
**PRINCIPAL**  
**L. D. SONAWANE COLLEGE**  
**Kalyan (W)**





# LAXMAN DEVRAM SONAWANE COLLEGE, KALYAN

DEGREE COLLEGE OF ARTS & COMMERCE INCLUDING BMS

(Accredited by NAAC with 'B' Grade & Permanently Affiliated to University of Mumbai)

&

JUNIOR COLLEGE OF ARTS, COMMERCE & SCIENCE

(Conducted by :- Kalyan Wholesale Merchants' Education Society)

Shri. Shantaram Hendar Bhoir

Chairman

Shri. Vijay R. Pandit

General Secretary

Ms. Annie Antony

I/c Principal

Opp. Fire Station,

Near Durgadi Killa,

Murbad Road,

Kalyan(W).

Phone:- 2212372/78

## Class Room



## Library



  
**PRINCIPAL**  
L.D. SONAWANE COLLEGE  
Kalyan (W)





# LAXMAN DEVRAM SONAWANE COLLEGE, KALYAN

DEGREE COLLEGE OF ARTS & COMMERCE INCLUDING BMS

(Accredited by NAAC with 'B' Grade & Permanently Affiliated to University of Mumbai)

&

JUNIOR COLLEGE OF ARTS, COMMERCE & SCIENCE

(Conducted by :- Kalyan Wholesale Merchants' Education Society)

Shri. Shantaram Hendar Bhoir

Chairman

Shri. Vijay R. Pandit

General Secretary

Ms. Annie Antony

I/c Principal

Opp. Fire Station,

Near Durgadi Killa,


Murbad Road,

Kalyan(W).

Phone:- 2212372/78

## Gymkhana



  
PRINCIPAL  
L.D. SONAWANE COLLEGE  
Kalyan (W)





# LAXMAN DEVRAM SONAWANE COLLEGE, KALYAN

DEGREE COLLEGE OF ARTS & COMMERCE INCLUDING BMS

(Accredited by NAAC with 'B' Grade & Permanently Affiliated to University of Mumbai)

&

JUNIOR COLLEGE OF ARTS, COMMERCE & SCIENCE

(Conducted by :- Kalyan Wholesale Merchants' Education Society)

Shri. Shantaram Hendar Bhoir

Chairman

Shri. Vijay R. Pandit

General Secretary

Ms. Annie Antony

I/c Principal

Opp. Fire Station,

Near Durgadi Killa,

Murbad Road,

Kalyan(W).

Phone:- 2212372/78

## Canteen



## Botanical Garden



  
**PRINCIPAL**  
L. D. SONAWANE COLLEGE  
Kalyan (W)





# LAXMAN DEVRAM SONAWANE COLLEGE, KALYAN

DEGREE COLLEGE OF ARTS & COMMERCE INCLUDING BMS

(Accredited by NAAC with 'B' Grade & Permanently Affiliated to University of Mumbai)

&

JUNIOR COLLEGE OF ARTS, COMMERCE & SCIENCE

(Conducted by :- Kalyan Wholesale Merchants' Education Society)

Shri. Shantaram Hendar Bhoir

Chairman

Shri. Vijay R. Pandit

General Secretary

Ms. Annie Antony

I/c Principal

Opp. Fire Station,  
Near Durgadi Killa,  
Murbad Road,  
Kalyan(W).  
Phone:- 2212372/78

## General Office



  
**PRINCIPAL**  
L. D. SONAWANE COLLEGE  
Kalyan (W)



**LAXMAN DEVRAM SONAWANE COLLEGE, KALYAN**



**DEGREE COLLEGE OF ARTS & COMMERCE INCLUDING BMS**  
(Accredited by NAAC with 'B' Grade & Permanently Affiliated to University of Mumbai)

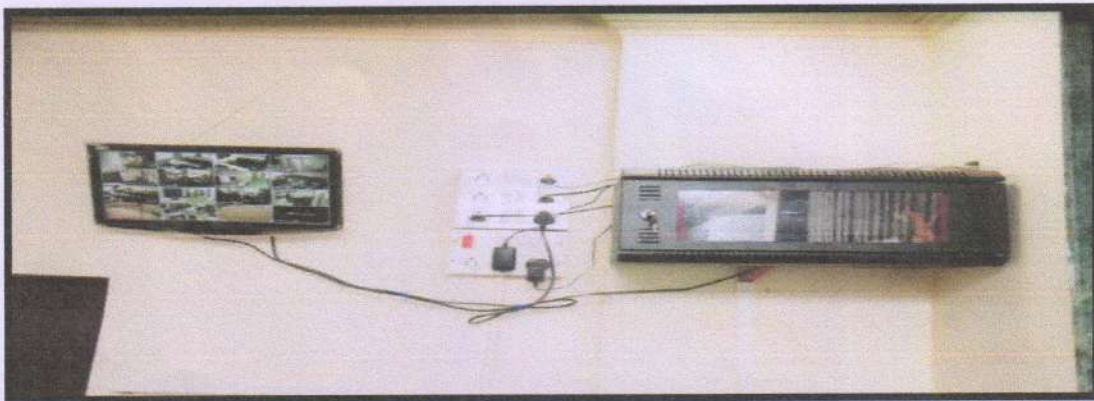
**&**

**JUNIOR COLLEGE OF ARTS, COMMERCE & SCIENCE**  
(Conducted by :- Kalyan Wholesale Merchants' Education Society)

Shri. Shantaram Hendar Bhoir  
Chairman  
Shri. Vijay R. Pandit  
General Secretary  
Ms. Annie Antony  
I/c Principal

Opp. Fire Station,  
Near Durgadi Killa,  
Murbad Road,  
Kalyan(W).  
Phone:- 2212372/78

**CCTV:**



**Generator**



**Barcode Scanner**



**PRINCIPAL**  
L. D. SONAWANE COLLEGE  
Kalyan (W)

**PRINCIPAL**  
L. D. SONAWANE COLLEGE  
Kalyan (W)





# LAXMAN DEVRAM SONAWANE COLLEGE, KALYAN

DEGREE COLLEGE OF ARTS & COMMERCE INCLUDING BMS

(Accredited by NAAC with 'B' Grade & Permanently Affiliated to University of Mumbai)

&

JUNIOR COLLEGE OF ARTS, COMMERCE & SCIENCE

(Conducted by :- Kalyan Wholesale Merchants' Education Society)

Shri. Shantaram Hendar Bhoir

Chairman

Shri. Vijay R. Pandit

General Secretary

Ms. Annie Antony

I/c Principal

Opp. Fire Station,

Near Durgadi Killa,

Murbad Road,

Kalyan(W).

Phone:- 2212372/78

## Water Cooler



## Fire Extinguisher



  
**PRINCIPAL**  
L. D. SONAWANE COLLEGE  
Kalyan (W)





**LAXMAN DEVRAM SONAWANE COLLEGE, KALYAN**  
**DEGREE COLLEGE OF ARTS & COMMERCE INCLUDING BMS**  
(Accredited by NAAC with 'B' Grade & Permanently Affiliated to University of Mumbai)  
&  
**JUNIOR COLLEGE OF ARTS, COMMERCE & SCIENCE**  
(Conducted by :- Kalyan Wholesale Merchants' Education Society)

Shri. Shantaram Hendar Bhoir  
Chairman  
Shri. Vijay R. Pandit  
General Secretary  
Ms. Annie Antony  
I/c Principal


Opp. Fire Station,  
Near Durgadi Killa,  
Murbad Road,  
Kalyan(W).  
Phone:- 2212372/78

**Automatic Sanitary Napkin Vending Machine:**



**Sanitary Napkin Disposal Machine:**



  
**PRINCIPAL**  
**L.D. SONAWANE COLLEGE**  
**Kalyan (W)**